

## »CIERRAPUERTAS HIDRAULICO GRADO 1 SERIE.SC60



When you need a dependable closer for a standard-duty application, the Falcon SC60 Series gets the job done. Designed for interior use with an aluminum storefront, the SC60 Series offers ANSI grade 1 durability backed by a ten-year warranty. Most common hole pattern in the industry for versatile use and easy retrofit.

### Standard features

- Fully adjustable 1-5
- Retrofittable, matches Norton 1600 hole pattern
- Meets ANSI A117.1
- ANSI/BHMA A156.4, grade 1
- UL listed
- 1 3/8" diameter piston
- Closer mounts hinge side, top jamb or parallel arm when either the RW/PA or HW/PA arm is specified.
- Single piece cast aluminum body
- Staked valves
- Non-handed for left or right swinging doors
- Separate adjustable general speed, latch speed and backcheck
- Heat-treated steel piston
- Heat-treated pinion
- UL 10C approved fluid
- Universal screw pack
- 10-year warranty

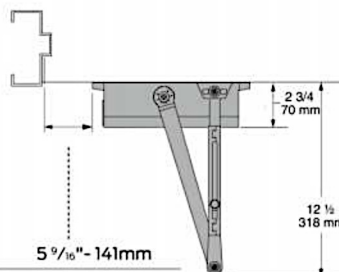
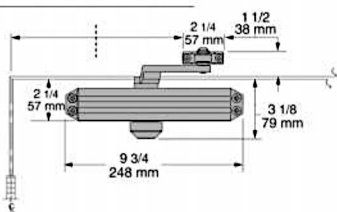
### Listings and certifications

The Falcon SC60 series is UL approved and compliant with the UL 10C and UBC 7-2 (1997) fire test. Additionally, the SC61 is designed to meet the American Disabilities Act (ADA) and ANSI A117.1. The SC60 Series is ANSI/BHMA A156.4, grade 1 certified.

### SC60 Series hinge (pull side)

To 120° 11 13/16" - 300mm

121° to 180° 8 1/4" - 210mm



To 120° 5 9/16" - 141mm

121° to 180° 2 9/16" - 65mm

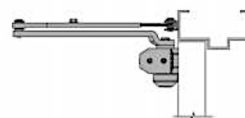
**Butt hinges** should not exceed 5" (127mm) in width.

**Auxiliary stop** is recommended at hold-open point or where a door cannot swing 180°.

**Reveal** should not exceed 3/4" (19mm) for regular arm or hold-open arm.

**Clearance** of 2 3/4" (70mm) behind door required for 90° installation.

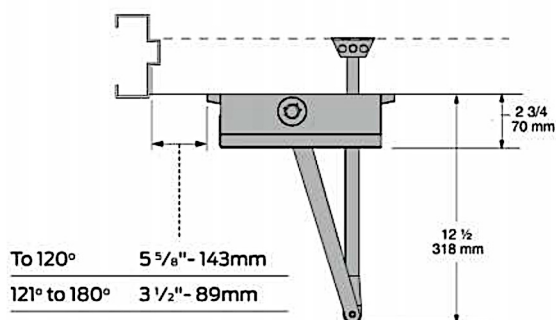
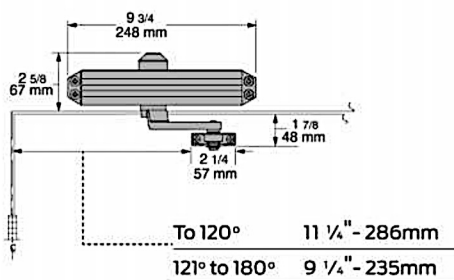
**Delayed action** add suffix "DEL" to selected cylinder (ex. SC60 DEL). Delays closing from maximum opening to approximately 70°, with adjustable delay time.



V03.24

## »CIERRAPUERTAS HIDRAULICO GRADO 1 SERIE.SC60

### SC60 Series top jamb (push side)



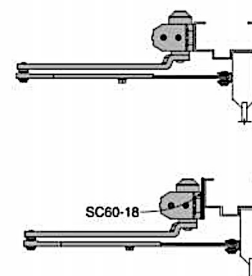
**Butt hinges** should not exceed 5" (127mm) in width.

**Auxiliary stop** is recommended at hold-open point or where a door cannot swing 180°.

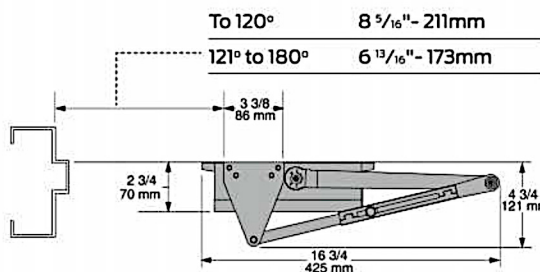
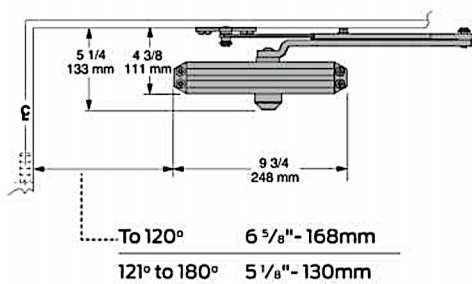
**Reveal** should not exceed 3 1/4" (83mm) for regular arm or hold-open arm.

**Head frame** less than 1 3/4" (44mm) requires plate SC60-18.

**Delayed action** add suffix "DEL" to selected cylinder (ex. SC60 DEL). Delays closing from maximum opening to approximately 70°, with adjustable delay time.



### SC60 Series parallel (push side)

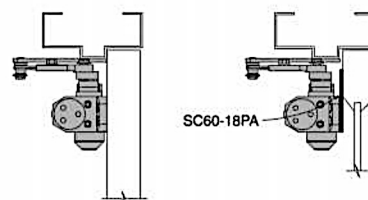


**Butt hinges** should not exceed 5" (127mm) in width.

**Auxiliary stop** is recommended at hold-open point or where a door cannot swing 180°.

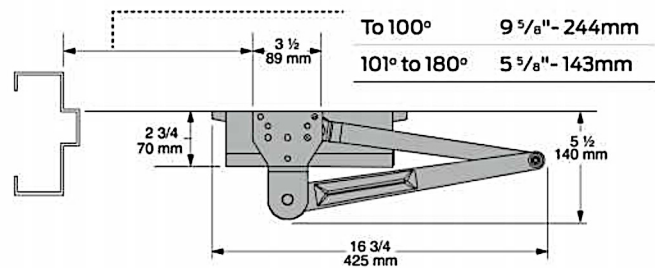
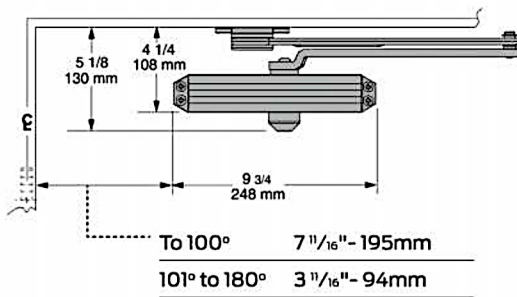
**Top rail** less than 4 3/8" (111mm) measured from stop requires plate SC60-18PA.

**Delayed action** add suffix "DEL" to selected cylinder (ex. SC60 DEL). Delays closing from maximum opening to approximately 70°, with adjustable delay time.



## »CIERRAPUERTAS HIDRAULICO GRADO 1 SERIE.SC60

### SC60 Series heavy duty (parallel)

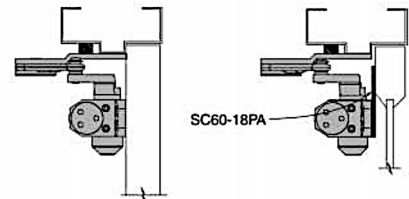


**Butt hinges** should not exceed 5" (127mm) in width.

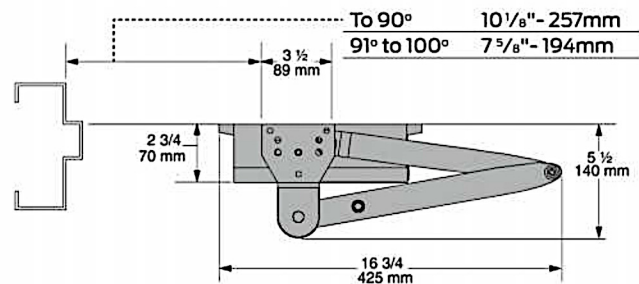
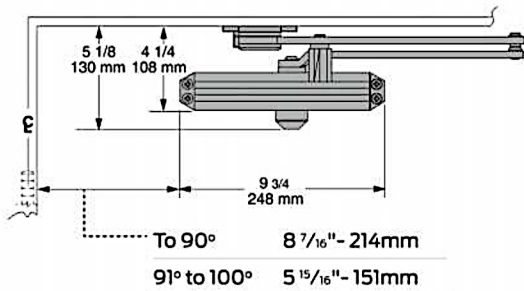
**Auxiliary stop** is recommended at hold-open point, where a door cannot swing 180° or where Dead stop or Spring-n-stop arm is not used.

**Top Rail** less than 4 1/4" (108mm) measured from stop requires plate SC60-18PA.

**Delayed Action** add suffix "DEL" to selected cylinder (ex. SC60 DEL). Delays closing from maximum opening to approximately 70°, with adjustable delay time.



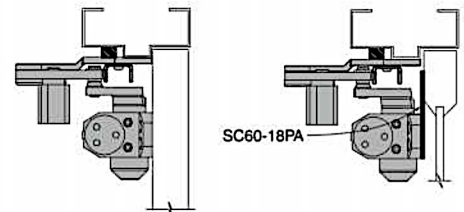
### SC60 Series dead stop HO (parallel)



**Butt hinges** should not exceed 5" (127mm) in width.

**Top rail** less than 4 1/4" (108mm) measured from stop requires plate SC60-18PA.

**Delayed action** add suffix "DEL" to selected cylinder (ex. SC60 DEL). Delays closing from maximum opening to approximately 70°, with adjustable delay time.





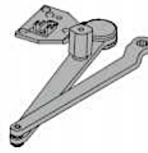


## »CIERRAPUERTAS HIDRAULICO GRADO 1 SERIE.SC60

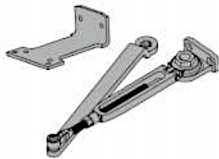
**Arm types** All SC60 Series closers come with standard arm and screw pack.



**Regular arm, SC60-3077PA**  
Non-handed arm with adjustable forearm assembly to accommodate a range of doors and frame reveal conditions. Mounts hinge side, top jamb or parallel arm. PA shoe included to allow installation in a parallel arm configuration.



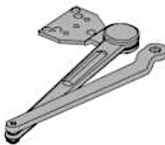
**Dead stop hold-open arm, SC60-3049DS**  
Optional, non-handed, stamped, heavy duty, hold-open parallel arm includes a positive mechanical stop and non-adjustable forearm assembly for high volume traffic or potentially abusive installation conditions. Also includes a manually selective hold-open function.



**Hold-open arm, SC60-3049PA**  
Optional, non-handed, hold open arm with adjustable forearm assembly to accommodate a range of doors and frame reveal conditions. Mounts hinge side, top jamb or parallel arm. PA shoe included to allow installation in a parallel arm configuration.



**Spring-n-stop arm, SC60-3077SS**  
Optional, non-handed, extra heavy-duty, forged parallel arm includes an integral spring stop and non-adjustable forearm assembly for high volume traffic or potentially abusive installation conditions.



**Heavy duty regular arm, SC60-3077HD**  
Optional, non-handed, stamped, heavy duty, parallel arm for use in high-traffic applications.



**Spring-n-stop hold-open arm, SC60-3049SS**  
Optional, non-handed, extra heavy-duty, forged parallel arm includes an integral spring stop and non-adjustable forearm assembly for high volume traffic or potentially abusive installation conditions. Also includes a manually selective hold-open function.

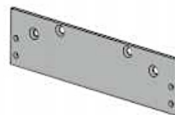


**Dead stop arm, SC60-3077DS**  
Optional, non-handed, stamped, heavy duty, parallel arm includes a positive mechanical stop and non-adjustable forearm assembly for high volume traffic or potentially abusive installation conditions.

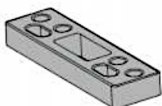
### Installation accessories



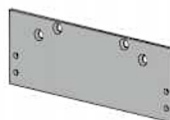
**Soffit shoe support, SC60-30**  
Provides anchorage for fifth screw used with soffit shoe, where reveal is less than 3 1/16" (78mm).



**Plate, SC60-18**  
Required for top jamb mounting where head frame is less than 1 3/4" (44mm).



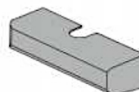
**Blade stop spacer, SC60-61**  
Required to lower parallel arm shoe to clear 1/2" (13mm) blade stop.



**Plate, SC60-18PA**  
Required for parallel arm mounting where top rail is less than 4 3/8" (111mm) for PA, 4 1/4" (108mm) for HD and DS, measured from the stop. Plate requires 2 3/8" (60mm) minimum top rail measured from stop.



**Auxiliary shoe, SC60-62A**  
Requires a top rail of 7" (178mm). Optional shoe replaces PA shoe for parallel arm mounting of regular arm with overhead holder/stop.



**Cover, SC60-72**  
Optional, non-handed, slim line plastic cover. Available on SC60 and SC61 only.



Puertas & Portones Automaticos, S.A. de C.V.

*¡Nuestra pasión es la Solución!....*

 (229) 461-7028



portonesautomaticos@adsver.com.mx  
portonesautomaticos@prodigy.net.mx



RESIDENCIAL



COMERCIAL



INDUSTRIAL



V03.24



(229) 927-55107, 167-8080, 167-8007, 151-7529

[www.adsver.com.mx](http://www.adsver.com.mx)