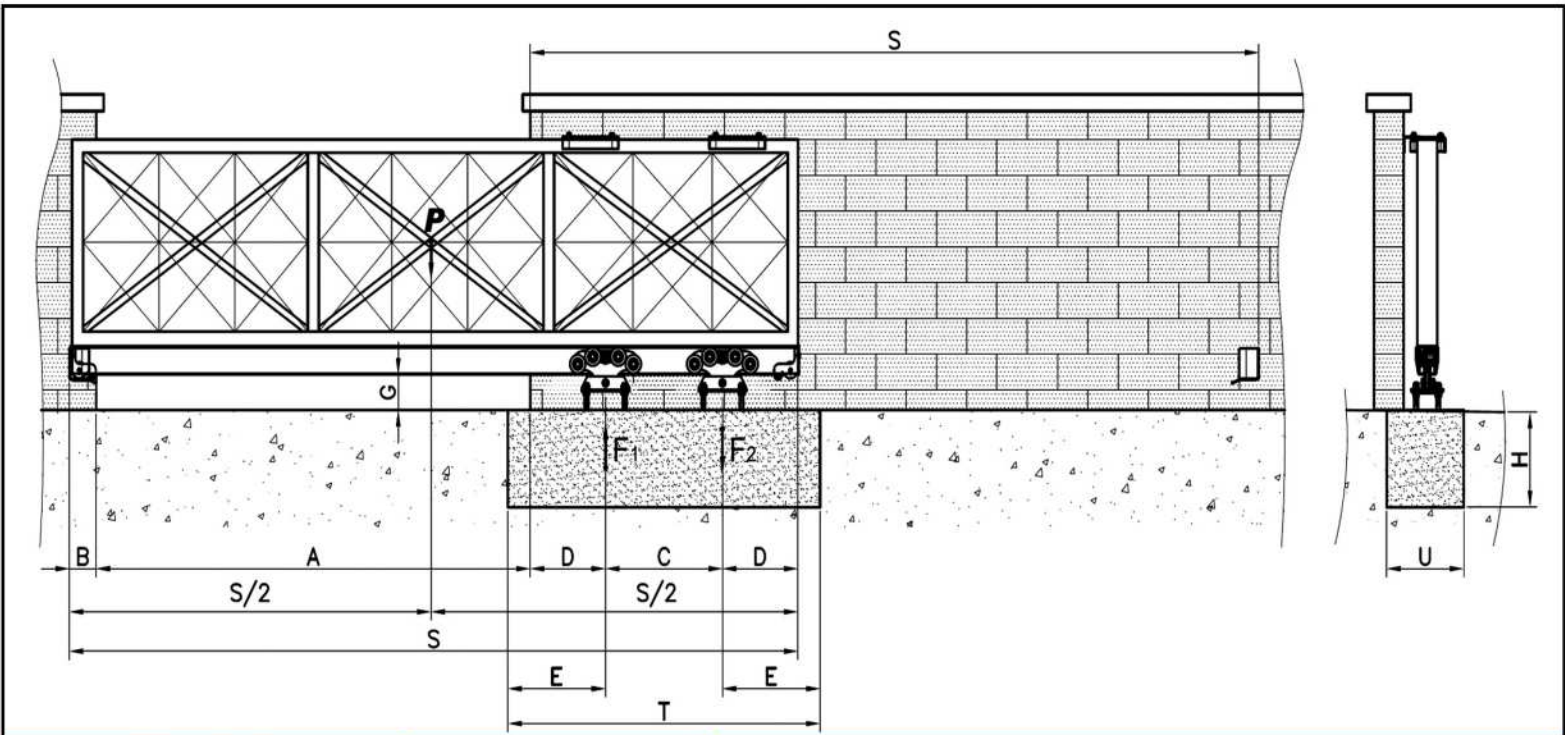
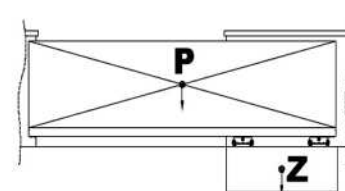


»ESPECIFICACIONES TECNICAS PORTON AUTOMATICO NANOGATE 8 METROS, PESO: 500KG.

SCHEDA TECNICA AUTOPORTANTI SERIE 2000C (Nanogate) FINO A 8 METRI – PESO MAX DEL CANCELLO: 500 KG



Dimensioni Dimensions			TxUxH min (m)	Carico uniforme (peso di tutta la lunghezza S) Uniform load (weight of total length S)		
A (m)	C (m)	S (m)		Pmax [kg] 500	Zmin [kg] 4100	Pmax senza-Without acc. FAC (kg)
5	0.80	6.20	2.0x1.0x1.0			465
5,5	0.85	6.75	2.0x1.0x1.0			430
6	0.90	7.30	2.0x1.0x1.0			405
6,5	0.95	7.85	2.0x1.0x1.0			380
7	0.95	8.35	2.1x1.0x1.0			355
7,5	1.00	8.90	2.1x1.0x1.0			335
8	1.00	9.40	2.1x1.0x1.0			315

Dati costanti-Fixed-data: F1max (kg) 2000 ; D (m) 0,2 ; B (m) 0.115 ; Gmin (m) 0.12 ; Emin (m) 0.60

A/C=6.5÷8



Attention: installations that do not comply with the illustrated procedure or failure to carry out correct maintenance operations can cause the gate to derail and endanger the safety of persons and property

(229) 288-1552









portonesautomaticos@adsver.com.mx
portonesautomaticos@prodigy.net.mx



V07.17

»ESPECIFICACIONES TECNICAS PORTON AUTOMATICO NANOGATE 8 METROS, PESO: 500KG.

SCHEDA TECNICA AUTOPORTANTI SERIE 2000C (Nanogate) FINO A 8 METRI – PESO MAX DEL CANCELLO: 500 KG

Essenziale - <i>Essential</i>		Alternativa <i>Alternative</i>	Opzionale - <i>Optional</i>
			
2 x ?100	2 x VD1201.100	2 x VD1200.100	2kit x VD1701.022
			
VD1406.100	2 x VD1301.100	2 x VD1300.100	2 x VD1501.022

Accessori complementari <i>Complementary accessories</i>				
	VA3131.i60	VA3105.i52	VA3201.B40	VA3207.B40
				
VA3302.i60	VA3203.B40	VA3206.B40	VA6200.001	

