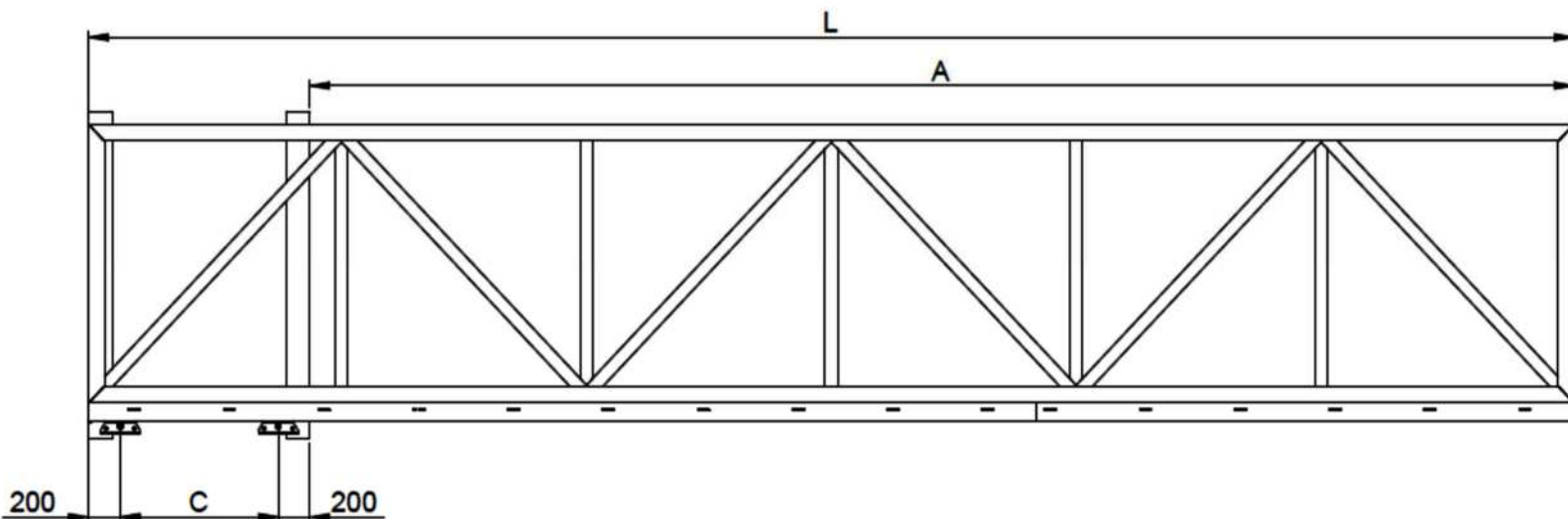


»ESPECIFICACIONES TECNICAS PORTON AUTOMATICO SERIE 2000



Serie 2000 Comp					Fondazione	
A [m]	C [m]	S [m]	P max telaio [kg]	P lineare [kg/m]	Z min [kg]	TxUxH min [m]
5	0,8	6,2	465	75	3900	2x1x1
5,5	0,85	6,75	430	64	3900	2x1x1
6	0,9	7,3	405	55	3900	2x1x1
6,5	0,95	7,85	380	48	3900	2x1x1
7	0,95	8,35	355	43	4000	2,1x1x1
7,5	1	8,9	335	38	4000	2,1x1x1
8	1	9,4	315	34	4100	2,1x1x1



Attention: installations that do not comply with the illustrated procedure or failure to carry out correct maintenance operations can cause the gate to derail and endanger the safety of persons and property

