

# HENDERSON



Puertas & Portones Automáticos, S.A. de C.V.

*¡Nuestra pasión es la Solución!...*

»HERRAJE PARA PORTON PLEGABLE MOD.TANGENT-301H

## Tangent 301H

**FOR FOLDING WOOD OR METAL DOORS**

### External folding

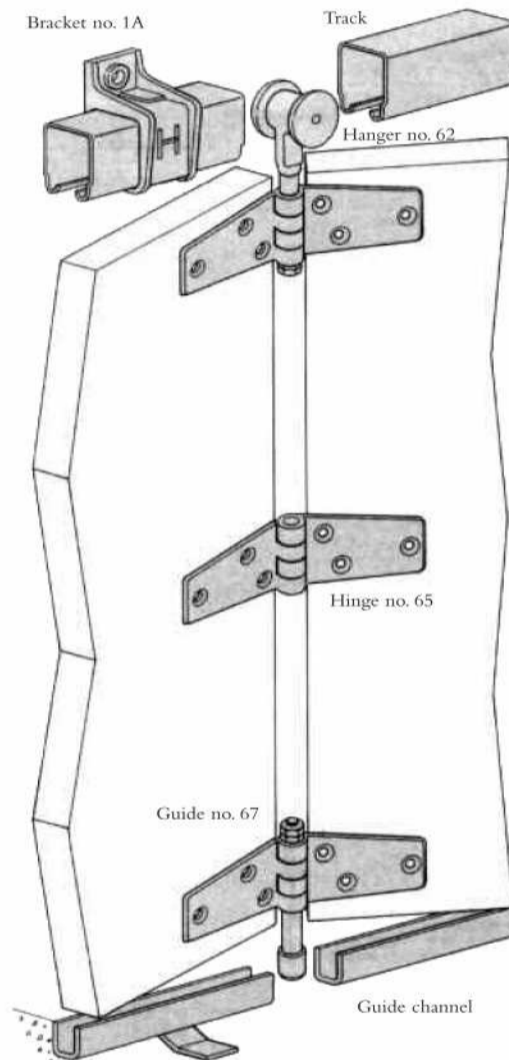
Robust top-hung door gear for commercial or light industrial wood or metal folding doors; deluxe fittings are also available in polished or satin anodised aluminium finishes. The door leaves may be panelled, flush or glazed. Seven systems are available to suit door leaf weights up to 80kg.

### COMPONENTS

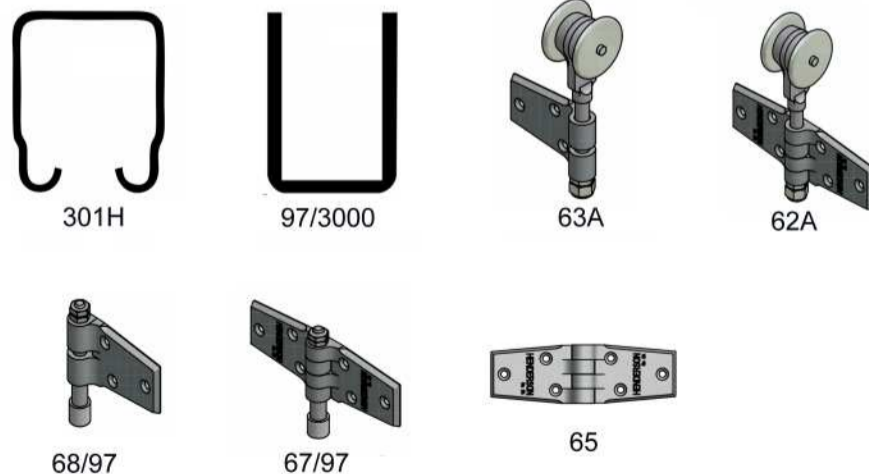
Components supplied include: track; support brackets; hangers; hinges; guides; bottom channel; range of accessories. (All steel parts are galvanised.) Consult our Technical Sales Team or 'Expert' Service for guidance on quantities (see table for maximum door leaf width and drawings for door leaf detail).

### INSTALLATION NOTES *(also see drawing)*

Hinges should be fixed to framing and joints to the door. Up to 8 door leaves can be hinged to jamb within the opening or behind a reveal. Freefloating units may also be used of 4, 6 or 8 door leaves for stability. A swinging pass door is only suitable for door leaves under 3000mm high and is obtained by using 3 or 5 door leaves hinged to the jamb or an independently hung door leaf (see plan for details). If over 3000mm high, an independently hung door leaf is recommended. Typical installation detail drawings are also available.



### CHOICE OF GEARS



(229) 288-1552

portonesautomaticos@adsver.com.mx  
portonesautomaticos@prodigy.net.mx



(229) 927-5107, 167-8080, 167-8007, 151-7529.

www.adsver.com.mx

V05.16





Read across to required door leaf weight and height, then read downwards.

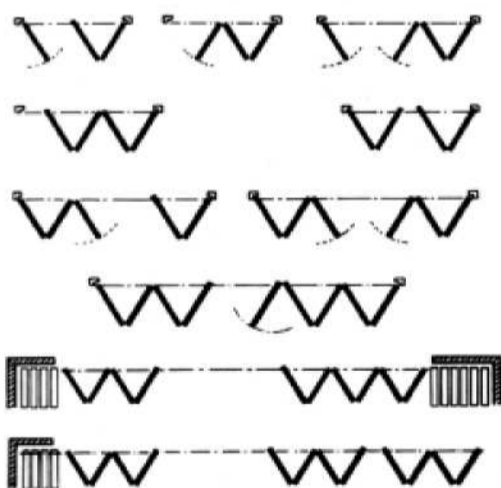
<b>Tangent Folding System No.</b>	<b>301H</b>		
<b>FINISH**</b>	STANDARD		
<b>Maximum Folding Door Leaf Height</b>	3600mm		
<b>Maximum Folding Door Leaf Weight</b>	70kg		
<b>Maximum Folding Door Leaf Width</b>	900mm		
<b>Door Leaf Thickness</b>	45-55mm		
<b>Track</b>	Equal to width of opening (extra if doors slide further) Available lengths: 1.8, 2, 2.5, 3, 4 & 6m		
<b>Brackets - face fixed</b>	1A/301		
<b>Brackets - soffit fixed</b>	3A/301		
	Fix every 900mm max and at track joints Fix extra bracket where door leaves stack		
<b>Hangers</b>	1 every 2 door leaves		
	Intermediate door leaves	62A	
	End Leaf	63A	
<b>Hinges</b>	3 in height*		
<b>Guides</b>	1 every 2 door leaves	Intermediate Leaves	67/97
		End Leaf	68/97
<b>Channel</b>	Same length as track (Galvanised wire steel)		97
<b>Handles</b>	1 every 2 door leaves		463
<b>Bolts</b>	1 every 2 door leaves		994

\*\* Standard or deluxe finishes (polished/anodised fittings) are available.

\* Increase to 4 hinges when doors exceed 3000mm high

No more than 8 leaves should be hinged together, and can be hinged to jamb or floating. A swinging pass door is obtained by using 3 or 5 leaves hinged to jamb, or an independently hung door leaf. For doors over 3000mm high a wicket door is recommended.

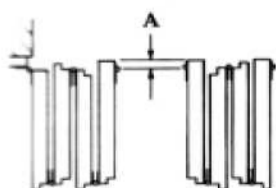
### EXAMPLE PLAN DETAILS



#### WIDTH OF LEAVES

ALL ALIKE EXCEPT END LEAVES WITH HANGERS WHICH MUST BE WIDER BY DIMENSION 'A'

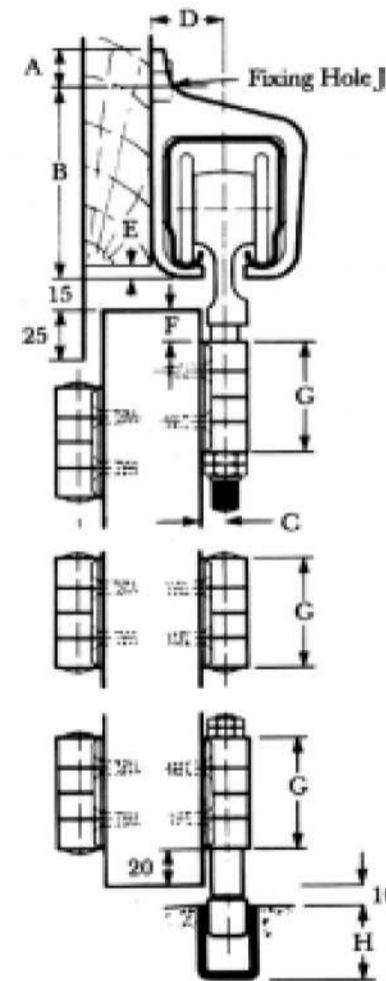
All dimensions are in mm.



TANGENT FOLDING & FOLDING DELUXE	A
TRACK 301H	30

## HOW TO CHOOSE YOUR DOOR HARDWARE

### SECTION DETAILS



#### DIMENSIONS

TRACK	A	B	C	D	E	F	G	H	J
301H	20	97	11	35	6	15	57	38	M12

