

STANLEY®



Puertas & Portones Automáticos, S.A. de C.V.

¡Nuestra pasión es la Solución!....

» PUERTA AUTOMÁTICA ABATIBLE AMBOS SENTIDOS



AUTOMATION RE-IMAGINED

EXPRESS-SWING™ LOW ENERGY AUTOMATIC DOOR

Introducing a new all-in-one retrofit-ready door optimized for speed and ease.

The Express-Swing was born from a partnership between STANLEY engineers, business owners, architects, contractors and end-users who share our passion for innovation. Together, along with STANLEY's 80 years of experience in door automation and technological expertise, we created the Express-Swing.

It's the industry's first ever low energy automatic door with synchronized bi-directional swing panels. It's ideal for any situation where space is limited or pedestrians need extra assistance entering or exiting.

- Easy to retrofit
- Easy to use
- Easy to maintain
- Ideal for small retail, post offices, labs, grocery, restaurant entrances and patios, hospitals and nursing homes

It's time to stop pushing, pulling and fighting manual doors and start automating them.



(229) 288-1552

portonesautomaticos@adsver.com.mx
portonesautomaticos@prodigy.net.mx



V07.16

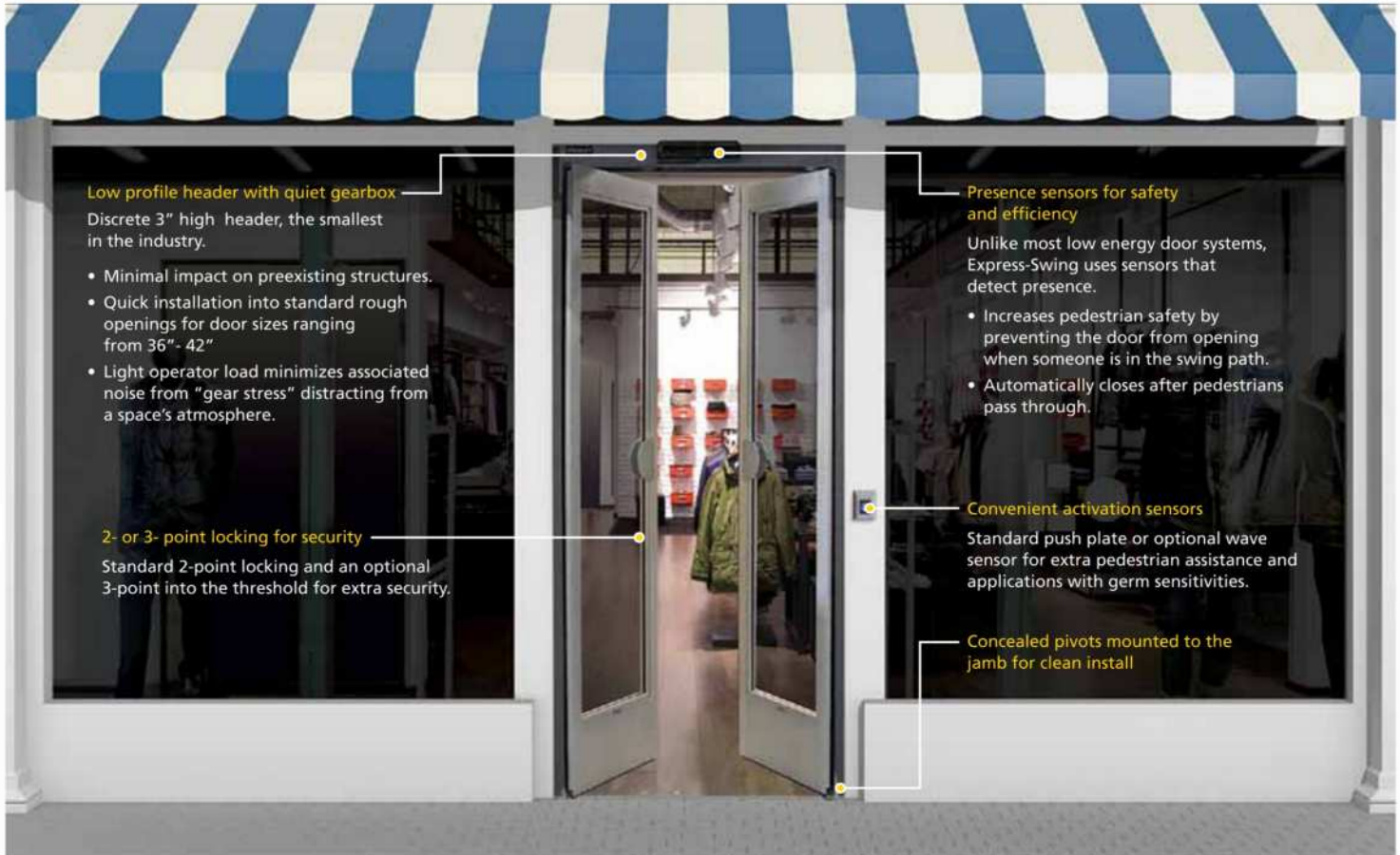
(229) 927-5107, 167-8080, 167-8007, 151-7529.

ADS

www.adsver.com.mx



» PUERTA AUTOMÁTICA ABATIBLE AMBOS SENTIDOS



Low profile header with quiet gearbox

Discrete 3" high header, the smallest in the industry.

- Minimal impact on preexisting structures.
- Quick installation into standard rough openings for door sizes ranging from 36" - 42"
- Light operator load minimizes associated noise from "gear stress" distracting from a space's atmosphere.

2- or 3- point locking for security

Standard 2-point locking and an optional 3-point into the threshold for extra security.

Presence sensors for safety and efficiency

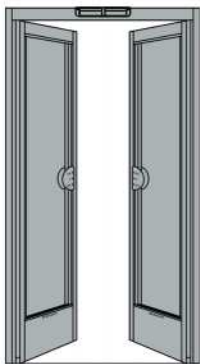
Unlike most low energy door systems, Express-Swing uses sensors that detect presence.

- Increases pedestrian safety by preventing the door from opening when someone is in the swing path.
- Automatically closes after pedestrians pass through.

Convenient activation sensors

Standard push plate or optional wave sensor for extra pedestrian assistance and applications with germ sensitivities.

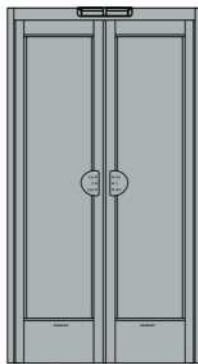
Concealed pivots mounted to the jamb for clean install



Bi-directional swing panels are faster and safer

The only low energy door with panels that swing both inward and outward, away from pedestrians whenever possible.

- Enables two-way traffic flow.
- Tested over 2 million cycles to far exceed UL, BHMA and ANSI standards.



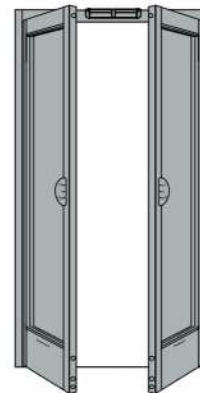
Narrow stiles for aesthetics

Help maximize site lines. Available in clear, dark bronze or special finishes.

Manual use

Ultra light panels and unique design.

- Requires less force to open than other low energy doors and most manual doors.



Two panel design is efficient and safe

Two small panels require only half the swing clearance of traditional swing doors.

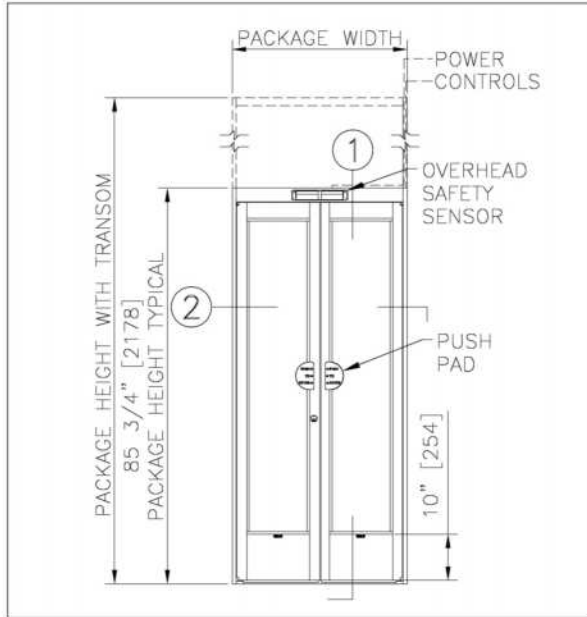
- Dramatically reduces the time the door remains open to help minimize HVAC costs.
- Smaller swing clearance improves safety for pedestrians.



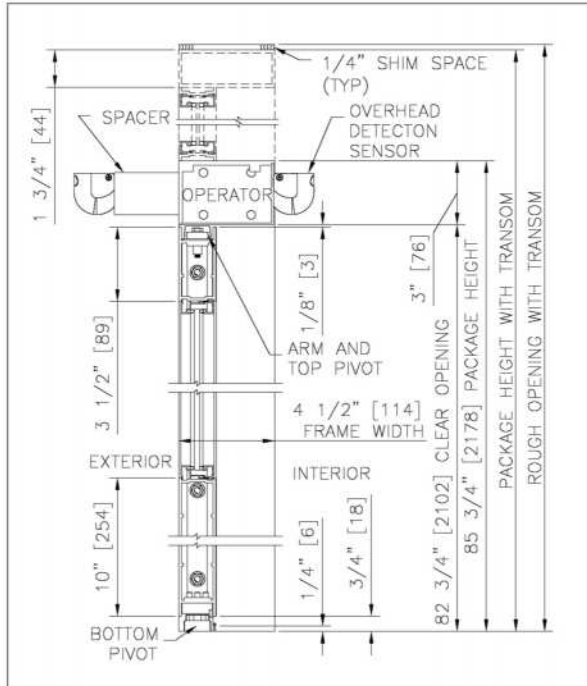


» PUERTA AUTOMÁTICA ABATIBLE AMBOS SENTIDOS

Views



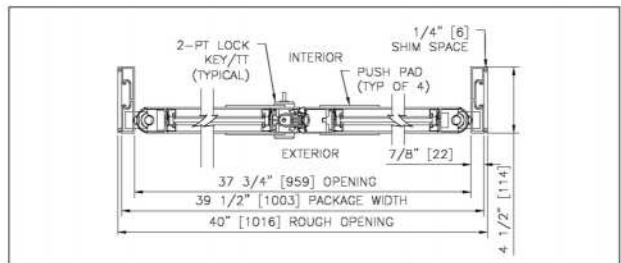
Elevation View: 7/8" Frame



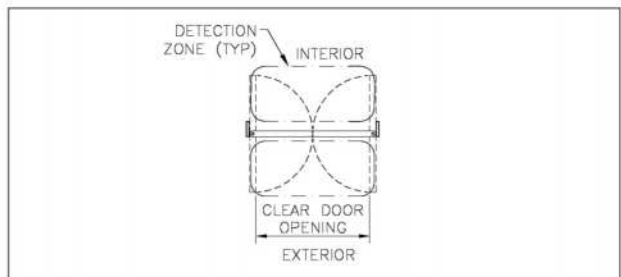
Vertical Section: 7/8" Frame

Product Specifications

Description	Standard Configuration	Optional
Design	Double Leaf	
Operation	Low energy, simultaneous pair, automatic, bi-directional swing door	
Jamb Dimension	7/8" x 4 1/2" or 1 3/4" x 4 1/2"	
Finish	Clear, Dark Bronze	Special Finish Available
Glass	1/4"	5/8" or 1"
Locking	Key Operated, 2-Point	3-Point
Controls	Power and Mode Switch	
Controller	Microprocessor	
Safety	Overhead Presence Sensors	
Activation	Push Plate (Wireless)	Touch-free Wave Sensor (Wired)
Transom	Optional	
Threshold	Universal threshold options available	
Muntin Bars	Optional	
Codes	UL, cUL, ANSI 156.19, NFPA 101	
Header Size	3" High x 4.5" Deep	
Panel Width	36" to 42" (2 Panels)	
Door Panel Weight	75 lbs. Per Panel (150 lbs. Per Opening)	
Drive System	3/16 HP DC Motor, Gear Drive	
Power Required	120 VAC, 5 amps min., 50/60 HZ	



Horizontal Section: 7/8" Frame



Plan View: 7/8" Frame

