

# STANLEY®



Puertas & Portones Automáticos, S.A. de C.V.

*¡Nuestra pasión es la Solución!...*

## » PUERTA AUTOMÁTICA CORREDIZA SERIE DURA-GLIDE



### DURA-GLIDE 2000/3000

**STANLEY** Access Technologies

(229) 288-1552

portonesautomaticos@adsver.com.mx  
portonesautomaticos@prodigy.net.mx



RESIDENCIAL



COMERCIAL



INDUSTRIAL



MEMBER

IDA  
International Door Association



V07.16

(229) 927-5107, 167-8080, 167-8007, 151-7529.



[www.adsver.com.mx](http://www.adsver.com.mx)

# STANLEY®



Puertas & Portones Automáticos, S.A. de C.V.

*¡Nuestra pasión es la Solución!....*

## » PUERTA AUTOMÁTICA CORREDIZA SERIE DURA-GLIDE



Airports & Hotels



Health Care



Supermarkets

## TECHNOLOGY, ENGINEERING & PERFORMANCE

Dura-Glide 2000 and 3000 Sliding Door Systems combine state-of-the-art microprocessor technology with advanced engineering to provide the safest, most dependable and highest performing door-systems in the industry today.

The Dura-Glide 2000 and 3000 Series is the industry standard for smooth, reliable operation in every application from high-traffic retail locations to upscale professional and institutional settings.

- Dura-Glide 2000 and 3000 are certified for Class 1 & 10 Clean Room applications.
- All components are fully tested and pre-assembled at the factory prior to shipping. Pre-assembled header components mean fast, trouble-free, installation at the job site.

### Dura-Glide™ 2000 & 3000 Series Doors

- Microprocessor controller continually monitors door position.
- Proven reliability with long-lasting cast urethane load-bearing wheels provides smooth, trouble-free operation.
- Adjustable anti-riser wheels lock each door in its track.
- Fiberglass reinforced toothed drive belt prevents slippage and uneven closing.
- Advanced motion sensors, Stan-Guard® threshold sensor and doorway holding beam provide complete pedestrian protection at all times.
- Weather Wise™ switch reduces opening widths on larger door systems to save energy in cold or hot weather.
- Power-operated automatic sliding doors may be used as emergency egress doors because panels "break-out" in the direction of egress.

The Dura-Glide 2000 and 3000 Series meet the demands for use in Airports, Hotels, Hospitals, Supermarkets, Retail, Office Buildings, Public Buildings, Schools, Universities and more!

(229) 288-1552

portonesautomaticos@adsver.com.mx  
portonesautomaticos@prodigy.net.mx



RESIDENCIAL



COMERCIAL



INDUSTRIAL

MEMBER



International Door Association



V07.16

(229) 927-5107, 167-8080, 167-8007, 151-7529.



www.adsver.com.mx





## » PUERTA AUTOMÁTICA CORREDIZA SERIE DURA-GLIDE



Food Service

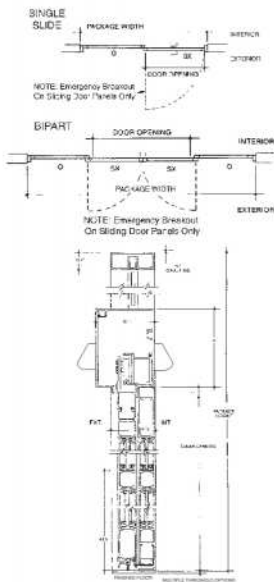


Retail

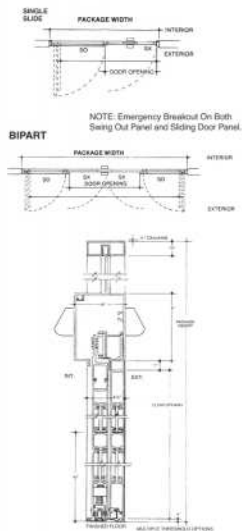


Office & Public Buildings

### DURA-GLIDE™ 2000 SERIES



### DURA-GLIDE™ 3000 SERIES



NOTE: Transom Package Available for both 2000 & 3000 Series

## STANDARD FEATURES

### STANLEY SU-100 MOTION SENSORS

STANLEY offers the SU-100 as a standard activation system. The uni-directional function only detects approaching traffic to reduce the length of time the door stays open, providing savings on loss of heat and air conditioning.



### SAFETY SYSTEM

The Stan-Guard® threshold sensor and a doorway holding beam. The Stan-Guard® and doorway holding beam detect people or objects in the door area and holds the doors open until the threshold area is clear.

## OPTIONAL FEATURES

### UNINTERRUPTED POWER SUPPLY (UPS)

Backup power supply provides an unmatched level of emergency egress in retail, health care & commercial environments. Allows easy access for pedestrians in emergency situations and reduces potential door package damage. Continued operation of automatic doors for up to 1.5 hours in the event of power outages or main power failure.

### RECESSED PANIC HARDWARE

Optimum security & easy access in emergency situations. Flush mounted panic hardware extends a minimum of half the door width. Non-handed, single size push bar accommodates door panel widths from 16" to 54" and integrates into a 4 1/4" muntin bar.



### SURFACE PANIC HARDWARE (Optional)



### ALL-GLASS DOORS AND SIDELIGHTS

Added elegance and beauty for upscale architecture.



### OTHER OPTIONAL FEATURES

- Class 1 and 10 Clean Room rating for Clean Rooms and computer centers
- Wind Resistant Damper improves safety and reduces repair costs by withstanding wind gusts up to twice that of a standard door package
- Transom Packages
- Jamb Camera
- Solenoid Lock
- Recessed Access Control
- Muntin Bars
- Sensor Substitute





## » PUERTA AUTOMÁTICA CORREDIZA SERIE DURA-GLIDE

# STANLEY®

Security

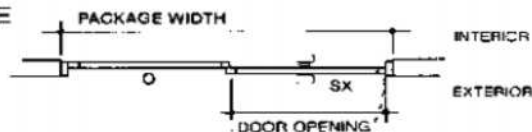
### FEATURES:

All models available in bi-part (double sliding) or single slide configuration.

BREAKOUT: (System is disabled when panels breakout)

### DG 2000 External Sliding Panels Only

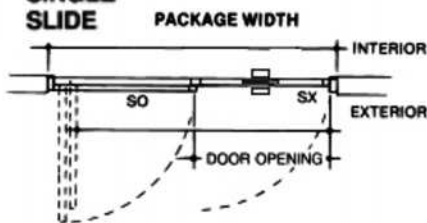
SINGLE  
SLIDE



NOTE: Emergency Breakout On Sliding Door Panels Only

### DG 3000 Full or All Panels Breakout

SINGLE  
SLIDE



NOTE: Emergency Breakout On Both Swing Out Panel and Sliding Door Panel.

### MICROPROCESSOR CONTROLLER:

- Adjustable Opening & Closing Speed
- Adjustable Distance & Speed of Breaking
- Adjustable Reduced Opening
- Adjustable Time Delay
- Auto Reverse on Obstruction
- Slow Speed Search for Obstruction

### DRIVE SYSTEM:

- 1/4 HP DC Gear Driven Motor
- Twin 1/4 HP DC Gear Driven Motors (Optional)

### SPECIFICATIONS

HEADER SIZE:	8" (203mm) high x 6" (152mm) deep
TYPICAL HEIGHT:	7'-8" (2.3m), clear door opening of 6'-11" (2.1m)
TYPICAL WIDTH:	Single Slide: 7' to 9' (2.1m to 2.7m), clear door opening width of 35-1/2" to 47-1/2" (901mm to 1206mm). Bi-Part: 10' to 14' (3m to 4.2m), clear door opening width of 48" to 72" (1219mm to 1828mm)
TYPICAL DOOR PANEL WEIGHT:	Up to 220 pounds each (100kg)
DRIVE SYSTEM:	1/4 HP DC motor, gear drive, toothed belt
CONTROLLER:	microprocessor based, safety logic, watchdog LED
SENSORS:	2 for motion (switchable between uni-directional and bidirectional) and 1 Stan-Guard® and doorway holding beam for safety.
BREAKOUT:	SX panel on the 2000, SX and SO panels on the 3000
POWER REQUIRED:	120 VAC, 5 amps min.
CODE COMPLIANCE:	UL, cUL, ANSI A156.10, UBC, BOCA, ICBO, NFPA 101

- Fiberglass Reinforced Toothed Timing Belt
- Maximum Panel Weight - Up to 400lb (with heavy duty option)
- Door Panels : Glass, Aluminum, Wood, Metal or Custom
- Speed Range: (based on size & weight of the door)  
Opening Speeds — .5' - 2.5' per sec.  
Closing Speeds — .5' - 1.5' per sec.
- Clear Door Opening Typical Width: 3' - 6'

Door packages are custom manufactured to fit your job requirements. For sizes greater or smaller than typical, contact your authorized Stanley Access Technologies Sales Representative.

